

The Miami-Dade  
Public Library Foundation

Cordially invites you  
to its  
Third Annual

Bench  
&  
Bar Bash

Chaired by

*Christine A. Gudaitis, Partner*

*Ver Ploeg & Lumpkin, P.A.*

&

*Timothy M. Ravich, Esq.*

*Clarke Silverglate & Campbell, P.A.*

Wednesday, October 28, 2009  
5:30 - 8:30 p.m.

Main Library · 101 West Flagler Street

Come mingle with members of the Judiciary  
while supporting your public library

Enjoy cocktails, appetizers, and live music  
by *The Urge*

Fable Sponsor:

VER PLOEG  
& LUMPKIN P.A.

МООНЧИНЕ  
ASIAN BISTRO · BAR · LOUNGE

Fairy Tale Sponsors:

Books & Books; Business Journal;  
Gibraltar Private Bank & Trust; Kelly Foundation, Inc.;  
Matusalem Rum; Meland Russin & Budwick, P.A.;  
Thornton, Davis & Fein, P.A.;  
Paella Party; University of Miami Law School HOPE Public  
Interest Resource Center

Folktale Sponsors:

Butler Pappas Weihmuller Katz Craig LLP;  
Cerveza Cusqueña; Ico-U-Go Productions, LLC;  
Norseman Shipbuilding Corporation;  
Arnaldo Velez and Maria C. Arriola Velez

General admission - \$45

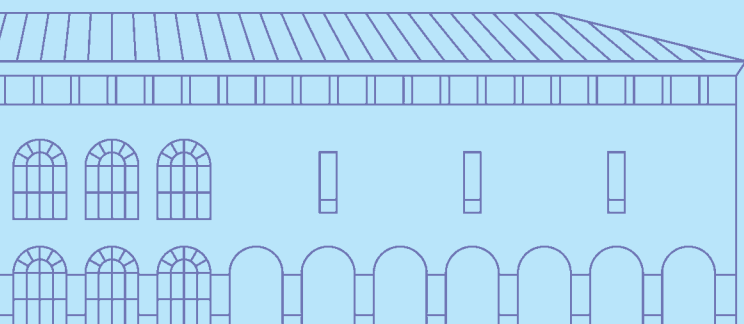
Law Clerks and Students - \$25

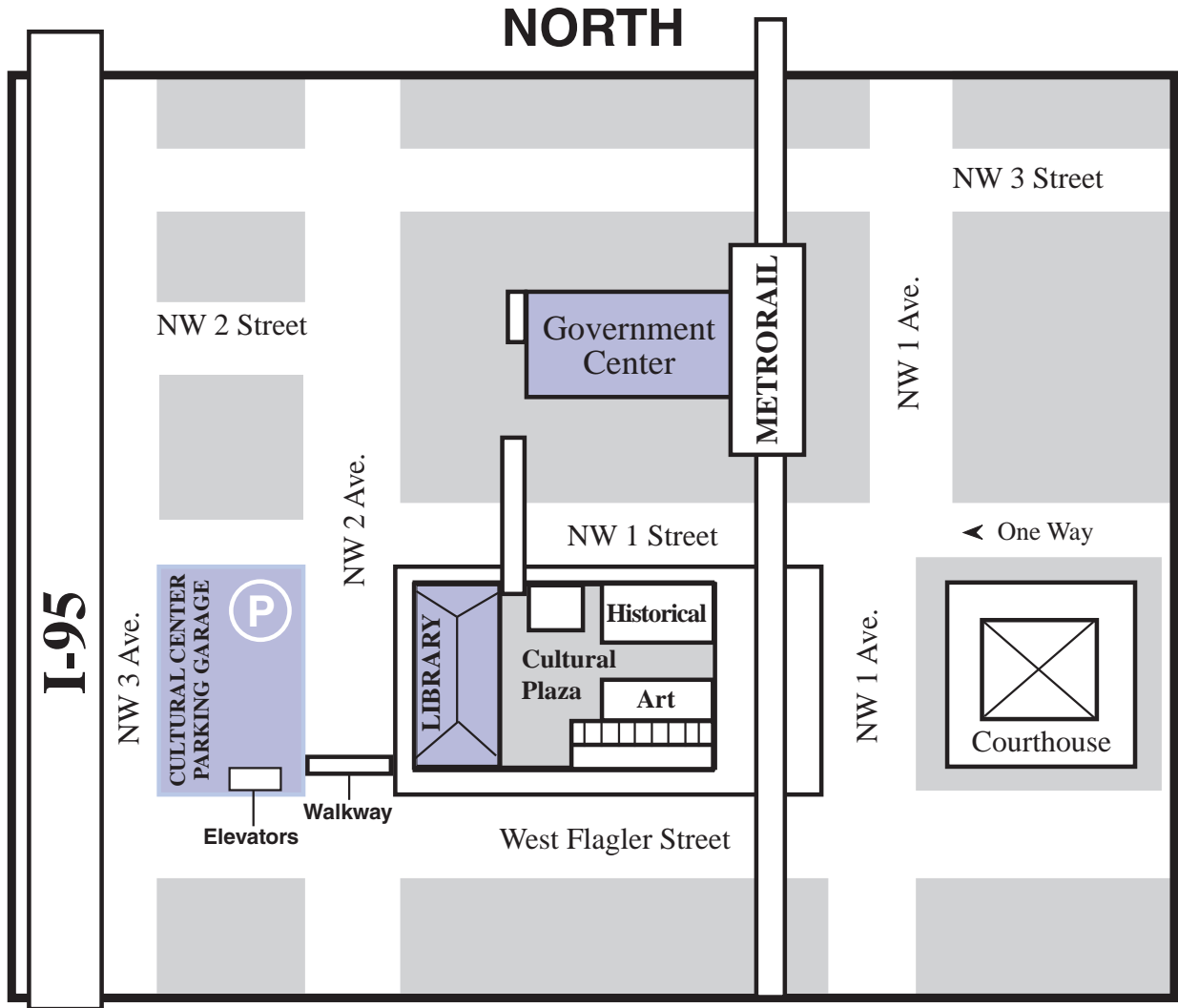
Judiciary - Complimentary

Tickets may be purchased online at  
[www.mdplf.org](http://www.mdplf.org) or at the door.

Remember to participate in our Silent Auction  
Proceeds benefit the Library's Literacy Programs  
Complimentary parking available at the adjacent  
Miami-Dade Cultural Center Garage 50 NW 2<sup>nd</sup> Ave.

For more information contact Kathleen Murphy:  
305.895.5843 · [kathleenmurphy@live.com](mailto:kathleenmurphy@live.com)





**FREE PARKING (while spaces available)**

**Miami-Dade Cultural Center Garage – 50 N.W. 2<sup>nd</sup> Avenue**  
 (entrance on N.W. 2<sup>nd</sup> Avenue - take south elevator to level 2,  
 cross walkway to the Cultural Center Plaza).

**From North:**

I-95 southbound, take Exit 3B (N.W. 8<sup>th</sup> Street) on the right  
 Turn left onto N.W. 2<sup>nd</sup> Street

**From South:**

I-95 northbound, Exit at N.W. 2<sup>nd</sup> Street

**From Metrorail:**

Exit at Government Center, walk south and cross N.W. 1<sup>st</sup> Street